

## Why Stream Video?

- In these uncertain times there is the desire and need to offer access to services that cannot be attended in person.
- Numbers at weddings and funerals are limited. These special occasions are one-offs, but do not have to be missed by others who will be able to access these events off-site.
- Streaming video allows you to operate in a different way. A way that will allow access now and enhance your provision for access for old and new participants in the future. Even when churches re-open people may continue to be reluctant to attend in person.
- We have developed a low-cost solution that provides high-quality live streaming from venues such as churches and function rooms.  
  
To move forward, many venues will now have to make the investment and open themselves to the public in new and innovative ways.
- Our system allows you to stream live and to record services for later broadcast, so that you can edit the output.

## About us and contact details

**Live Streaming Services** is made of up three professionals who are experts in their field giving you a very high level of expertise in which you can have complete confidence.

**Kevin and Sam Wilkinson of Spectrum Web Products** are experts in web development and communications infrastructure and will ensure that the right connections are in place. They will set up and install the equipment so that it all works seamlessly.

**Peter Ralley** runs **Peter RALi Studios** which specialises in digital interpretation. He has a specialism in churches and aims to provide low-cost, high quality solutions to digital needs. Peter will handle the site survey, procurement and training.

**Contact us for information or a no obligation quote on:**

**Tel: 07792 075855 / 01283 790054**  
**Email: peter@rali.org.uk**

**For more information visit:**  
**[www.rali.org.uk](http://www.rali.org.uk)**



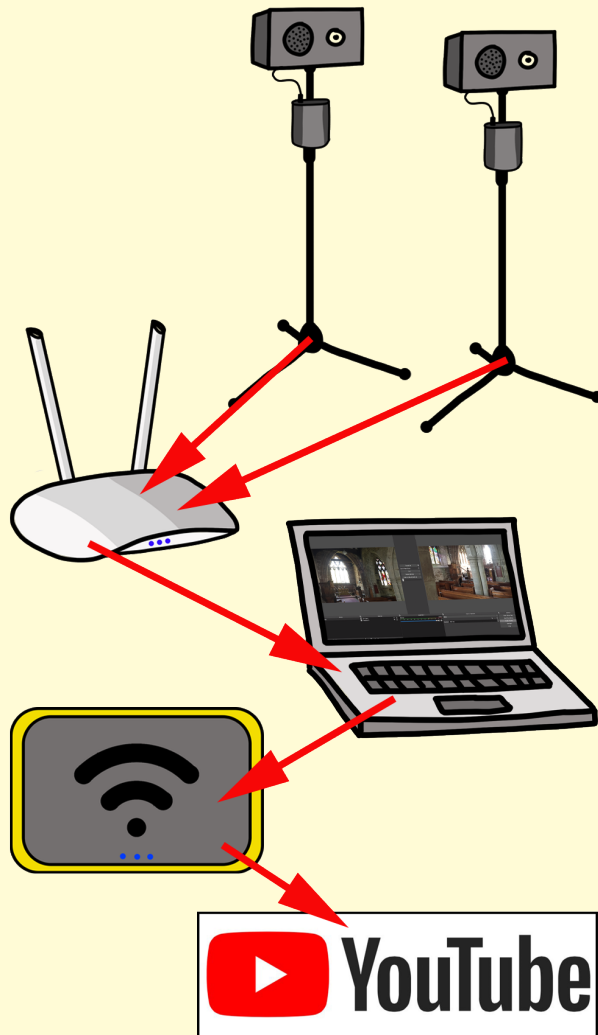
# Live Streaming Services

An affordable solution  
to live streaming  
in churches



## How It Works

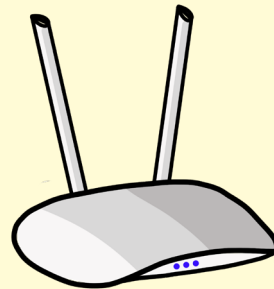
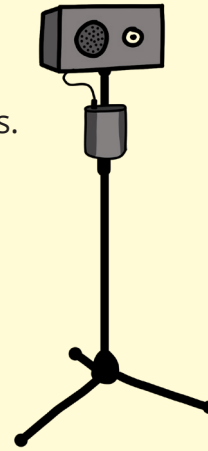
This diagram shows how everything is connected together.



The cameras connect to the computer via the hub. As the service is filmed, the camera feed is sent, via the WiFi or 4g hub to YouTube where it can be watched..

## What You Will Need

High definition WiFi enabled, video cameras. We supply them with battery packs and stands. Two are suggested as a minimum



A WiFi hub to connect the cameras to your computer



A suitable laptop or desktop computer with Video mixing software

An on-site PA system or wireless lapel microphone



On-site WiFi or a 4g mobile internet hub

A YouTube account to host the live streaming



## The Costs

Every venue is uniquely different and will have differing requirements depending on what infrastructure is already in place.

We will carry out a physical and/or virtual survey of your site to ascertain your needs and procure the necessary equipment.

### The Essentials

- 1 x camera, battery & stand - **£135**
- WiFi hub to connect cameras - **£30**
- Mains charger for camera battery - **£12**

### Additional Equipment (dependent upon site)

- Cable to connect to PA - **£15**
- Wireless lapel microphone - **£160**
- Laptop/Desktop PC - **£450-£800**
- Mobile WiFi access hub - **£350** pa approx

### Setup Fee - **£250** Includes:

- Survey & equipment specification
- Configuring 2x cameras
- System setup, configuring computer and networking.
- On-site training + 3 months remote support

### Additional Setup Fees

- Setup each additional camera - **£20**

*Please note that prices may change and these costs are indicative only. We will always aim to give you the best value for money at the time we procure your equipment.*